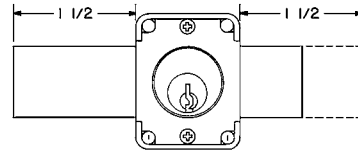
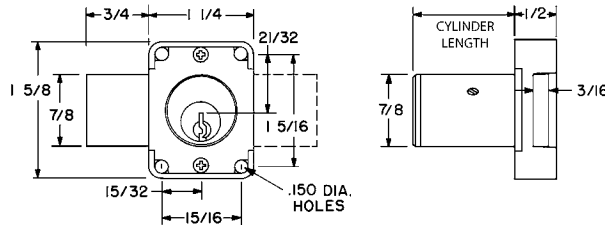


► 100DR | 100M Deadbolt Lock



LB: Long bolt option

ANSI/BHMA
A156.11 Grade 1
E07121
Woodwork Institute
(WI) acknowledged
product

Item	Function	Finish	Cyl. Length	Keying
100DR	Door	26D, US4, 10B	15/16"	KD, KA 101,103,107,915 KA 51001,51002,51003,51004*note Custom keyed
100DR	Door	26D, US4, 10B	1-3/8"	
100M	Door (MRI)	26D	15/16" or 1-3/8"	
Key-retaining:		Specify item 100KL for left-hand doors and 100KR for right-hand doors. (KL and KR designation are <i>only required</i> for key retaining locks).		
Key-retaining (MRI):		Specify item 100MKL for left-hand doors and 100MKR for right-hand doors. (MKL and MKR designation are <i>only required</i> for key retaining MRI locks).		
Long bolt:		Specify LB for long bolt installed in lock.		

*note KA# 51001, 51002, 51003 and 51004 available in US26D finish only

SPECIFICATIONS

- Keying:** Can be keyed together with other N Series locks
- Rekeyable:** Easily rekeyable via set screw cylinder release mechanism
- ANSI/BHMA:** Passed ANSI/BHMA A156.11 Grade 1 performance requirements. Equivalent to E07121(100DR) / E07041(200DW).
- 100M/200M:** M Series (MRI) locks are made of all non-magnetic materials and components specifically for use in MRI medical applications.
- Standard function:** Key removable in locked or unlocked position. Standard function locks are non-handed.
- Key-retaining:** Key removable in locked position only. Specify handing (KL/KR for doors or KI/KV for drawers) when ordering.
- US Patent Nos:** 4,899,563; 4,920,774
- Body:** Zinc die cast
- Cylinder:** Solid brass, pin tumbler
- Cylinder length:** 15/16", 1-3/8" or 1-5/8"
- Barrel diameter:** 7/8"
- Finish:** 26D, US4 or 10B
- Packaged:** Packed 10 per box

KEYING INFORMATION

- Keyway:** N Series (equivalent to National D4291 4-pin or D4292 5-pin system)
- Keys:** Includes 2 keys per lock
- Stock keying:** KD/KA - 4 pin standard
- Stock KA#:** 101, 103, 107, 915, 51001, 51002, 51003, 51004*note
- Masterkeyed:** 5 pin standard
- Grand masterkeyed:** Available
- Keyblank 4-pin:** KBN-4-NP (equivalent to NA14, 1069L)
- Keyblank 5-pin:** KBN-5-NP (equivalent to NA12, 1069LA)
- Keyblank 5-pin copper plated:** KBN-5B (use with 100M/200M MRI locks)

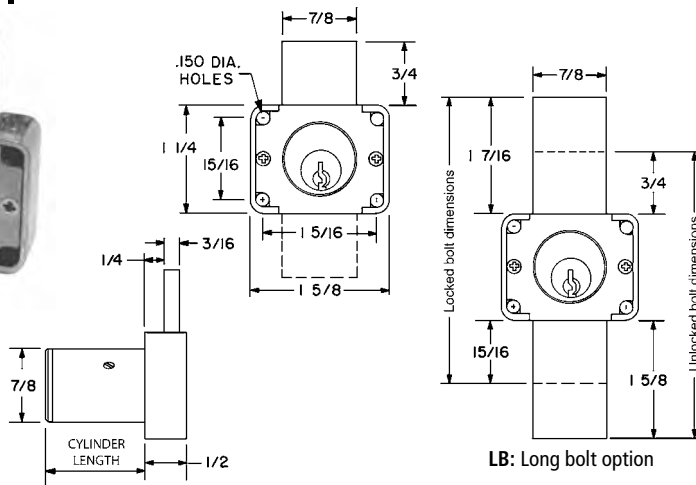
INCLUDED ACCESSORIES

- 100DR:** 2 keys, 56-1 bar strike, and lock mounting screws
- 100M:** 2 keys, 56-1 bar strike, and lock mounting screws (keys, components and materials are non-ferrous/non-magnetic)
- 200DW:** 2 keys, 12-3 angle strike, and lock mounting screws
- 200M:** 2 keys, 56-1 bar strike, and lock mounting screws (keys, components and materials are non-ferrous/non-magnetic)

OPTIONAL ACCESSORIES

- See the accessories section of this catalog for a complete list.
- Spacers:** WP21 (3/32" thick), WP22 (1/4" thick), WP23 (1/2" thick)
- Strikes:** 07S, 12-1, 12-2, 12-3, 12-4, 56-1
- Trim collars:** TR1256
- Through-bolt hardware:** ETS2 trim plate, ETS2-PL trim pull and ETST2 template
- Long bolt (bolt only):** 15-1-35 for use with 100DR/100M or 200DW/200M locks

► 200DW | 200M Drawer Lock



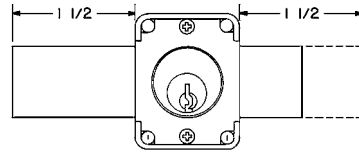
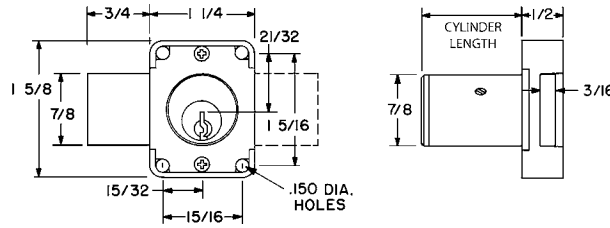
LB: Long bolt option

ANSI/BHMA
A156.11 Grade 1
E07041
Woodwork Institute
(WI) acknowledged
product

Item	Function	Finish	Cyl. Length	Keying
200DW	Drawer	26D, US4, 10B	15/16" or 1-3/8"	KD, KA 101,103,107,915 KA 51001,51002,51003,51004*note Custom keyed
200DW	Drawer	26D, 10B	1-5/8"	
200M	Drawer (MRI)	26D	15/16", 1-3/8" or 1-5/8"	
Key-retaining:		Specify item 200KI for inverted drawers and 200KV for vertical drawers. (KI and KV designations are <i>only required</i> for key retaining locks).		
Key-retaining (MRI):		Specify item 200MKI for inverted drawers and 200MKV for vertical drawers. (MKI and MKV designations are <i>only required</i> for key retaining MRI locks).		
Long bolt:		Specify LB for long bolt installed in lock.		

*note KA# 51001, 51002, 51003 and 51004 available in US26D finish only

► 500DR | 500M Door Lock



ANSI/BHMA
A156.11 Grade 1
E07121
Woodwork Institute
(WI) acknowledged
product

Item	Function	Finish	Cyl. Length	Keying
500DR	Door	26D, US4, 10B	15/16"	KD, KA 4T21579, 4T37526 Custom Keyed
500DR	Door	26D, US4	1-3/8"	
500M	Door (MRI)	26D	15/16" or 1-3/8"	
Key-retaining:		Specify item 500KL for left-hand doors and 500KR for right-hand doors. (KL and KR designation are <i>only required for key retaining locks</i>).		
Key-retaining (MRI):		Specify item 500MKL for left-hand doors and 500MKR for right-hand doors. (MKL and MKR designation are <i>only required for key retaining MRI locks</i>).		
Long bolt:		Specify LB for long bolt installed in lock.		

SPECIFICATIONS

Keying: Can be keyed together with other R Series locks
Rekeyable: Easily rekeyable via set screw cylinder release mechanism
ANSI/BHMA: Passed ANSI/BHMA A156.11 Grade 1 performance requirements. Equivalent to E07121(500DR) / E07041(600DW).
500M/600M: M series (MRI) locks are made of all non-magnetic materials and components specifically for use in MRI medical applications.
Standard function: Key removable in locked or unlocked position. Standard function locks are non-handed.
Key-retaining: Key removable in locked position only. Specify handing (KL/KR for doors or KI/KV for drawers) when ordering.
US Patent Nos: 4,899,563; 4,920,774
Body: Zinc die cast
Cylinder: Solid brass, pin tumbler
Cylinder length: 15/16" or 1-3/8"
Barrel diameter: 7/8"
Finish: 26D, US4 or 10B
Packaged: Packed 10 per box

KEYING INFORMATION

Keyway: R Series (equivalent to CCL R1 system)
Keys: Includes 2 keys per lock
Stock keying: KD/KA - 5 pin standard
Stock KA#: 4T21579, 4T37526
Master keyed: 5 pin standard, 6 pin available
Grand masterkeyed: Available
Keyblank 5-pin: KBR-5-NP (equivalent to C0106, 1003A)
Keyblank 5-pin copper plated: KBR-5B (use with M Series MRI locks)
Keyblank 6-pin: KBR-6-NP (equivalent to L1003A)

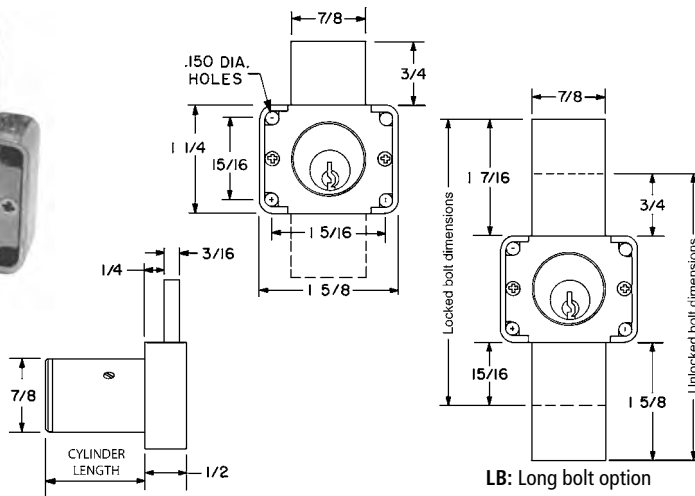
INCLUDED ACCESSORIES

500DR: 2 keys, 56-1 bar strike, and lock mounting screws.
500M: 2 keys, 56-1 bar strike, and lock mounting screws (keys, components and materials are non-ferrous/non-magnetic).
600DW: 2 keys, 12-3 angle strike, and lock mounting screws.
600M: 2 keys, 56-1 bar strike, and lock mounting screws (keys, components and materials are non-ferrous/non-magnetic).

OPTIONAL ACCESSORIES

See the accessories section of this catalog for a complete list.
Spacers: WP21 (3/32" thick), WP22 (1/4" thick), WP23 (1/2" thickness)
Strikes: 07S, 12-1, 12-2, 12-3, 12-4, 56-1 strikes
Trip collar: TR1256
Through-bolt hardware: ETS2 trim plate, ETS2-PL trim pull and ETST2 template
Long bolt (bolt only): 15-1-35 for use with 500DR/500M or 600DW/600M locks

► 600DW | 600M Drawer Lock



ANSI/BHMA
A156.11 Grade 1
E07041
Woodwork Institute
(WI) acknowledged
product

Item	Function	Finish	Cyl. Length	Keying
600DW	Drawer	26D, US4, 10B	15/16" or 1-3/8"	KD, KA 4T21579, 4T37526 Custom Keyed
600M	Drawer (MRI)	26D	15/16" or 1-3/8"	
Key-retaining:		Specify item 600KI for inverted drawers and 600KV for vertical drawers. (KI and KV designation are <i>only required for key retaining locks</i>).		
Key-retaining (MRI):		Specify item 600MKI for inverted drawers and 600MKV for vertical drawers. (MKI and MKV designations are <i>only required for key retaining MRI locks</i>).		
Long bolt:		Specify LB for long bolt installed in lock.		